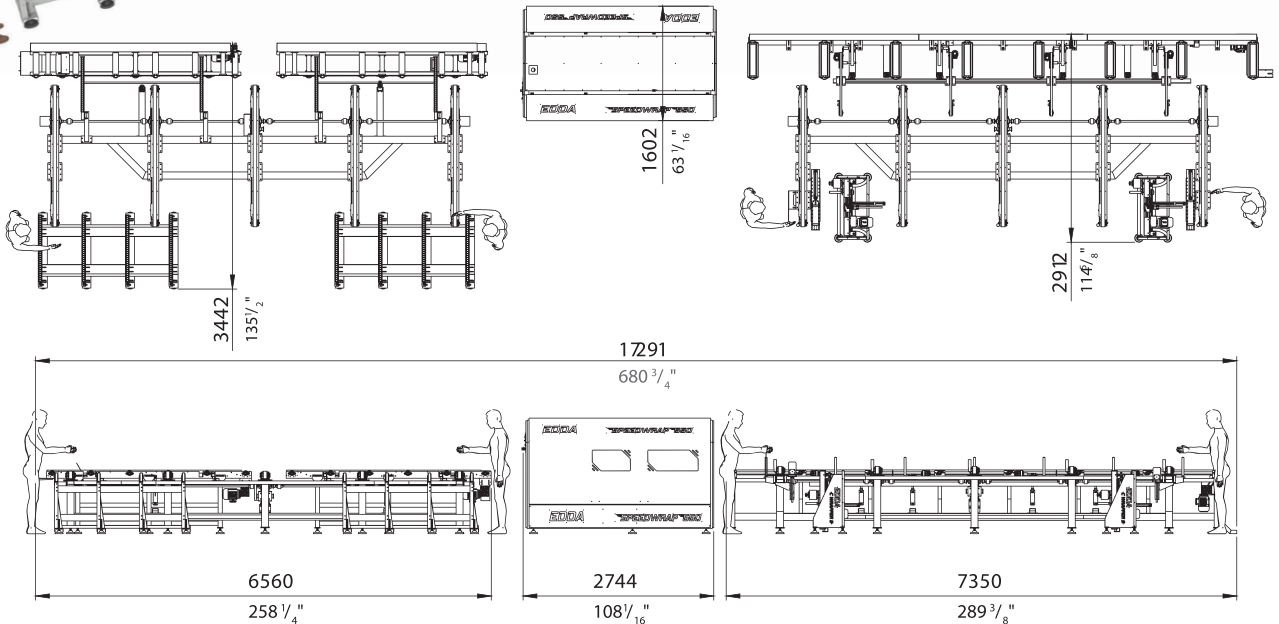
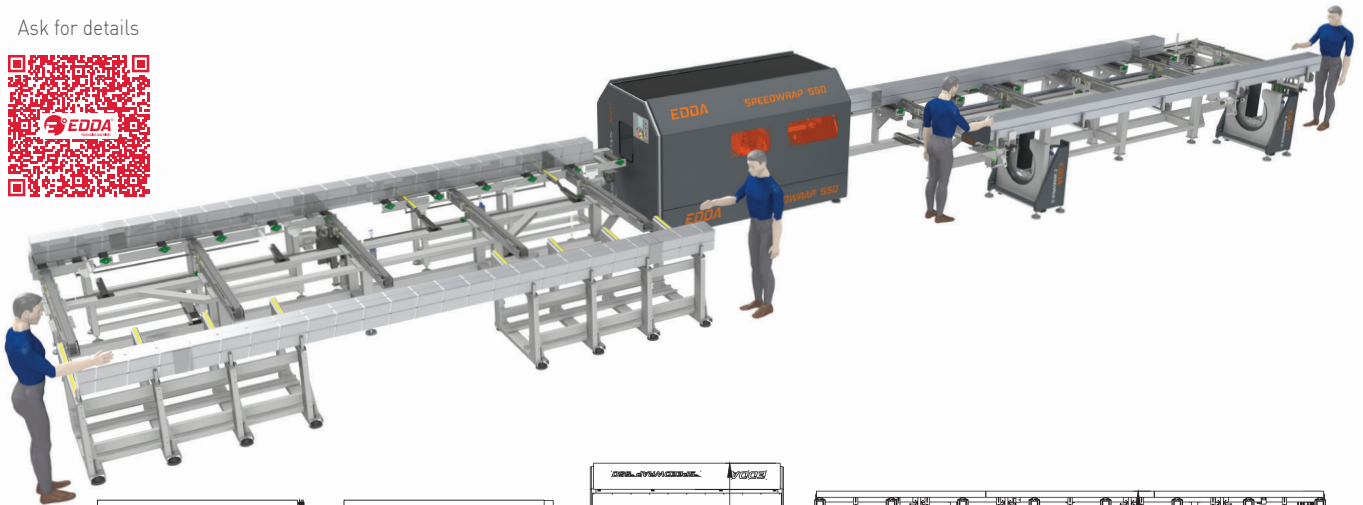


# SPEEDWRAP PROFILINE

ALUMINIUM, STEEL AND WOOD PROFILES AND PIPES - PVC PROFILE PRODUCTS ETC.

Ask for details



AUTOMATED LINES

## TECHNICAL FEATURES

### PRODUCT TO WRAP SIZES

Max. Length	mm/inch	6000	236 7/32"
Max. Width x Max. Height	mm/inch	260 x 270	10 15/64" x 10 5/8"
Min. Dimensions (W x H x L)	mm/inch	70 x 18 x 1000	2 3/4" x 4 5/64" x 39 3/8"

### CONVEYOR BELT'S FEATURES

Useful Length			*Check the technical drawing
Total Length			*Check the technical drawing
Working Height			*Check the technical drawing
Electric Motor Power	kW	0,55	
Max. Conveyor Speed	m/min.	36	
Max. Load Capacity	kg/m.	100	

### STRETCH FILM FEATURES

Max. Width	mm/inch	170	6 57/64"
Max. Diameter	mm/inch	Ø 230	9 1/16"
Reel Core Diameter	mm/inch	Ø 76	2 63/64"
Recommended Thickness	micron	23, 30, 35	
Wrapping Technology		Double cartridge units	(Max. Weight: 3 kg)

### MACHINE GENERAL FEATURES

*Electric Supply	Volt - Hz	380 Volt - 50/60 Hz - 3P+1N+1G
------------------	-----------	--------------------------------

\*\*Please contact to Sales Representative for details

\* 208 Volt, 380 Volt, 415 Volt, 480 Volt 50/60 Hz (optional)

